



GASTROENTEROLOGY

ELUXEO™ 700 SERIES ENDOSCOPES



ONE-STEP
CONNECTOR



G7 GRIP

Design Award Winner
ELUXEO™ EC-760ZP-VM / VL

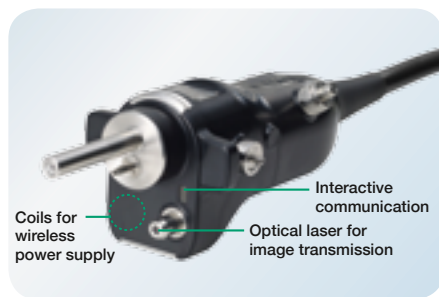


The ELUXEO™ 700 series of Fujifilm scopes with One-Step Connector and easy-to-control G7 grip is designed to lead you efficiently and effectively through your examination.

ONE-STEP CONNECTOR FOR EASY PLUG-IN



The One-Step Connector can be plugged in easily and the 700 series endoscopes are the first to incorporate an integrated wireless power supply that provides high speed transmission of data. The new design helps to simplify the cleaning process and also reduces the potential for accidental damage.



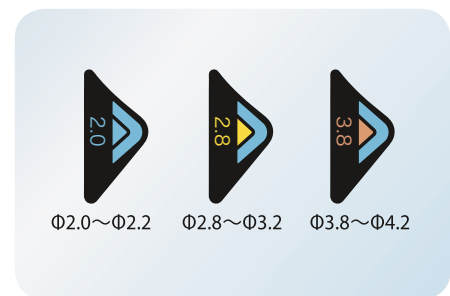
G7 GRIP FOR OPTIMUM COMFORT IN DAILY PRACTICE



In close cooperation with leading endoscopists, Fujifilm has renewed the layout and size of the components of the control portion and repositioned the angulation knobs to increase accessibility from the grip. The G7 grip is designed to have an easy and comfortable feel that optimises performance and minimises stress during clinical procedures.



- 1 Colour of G7 control portion
- 2 Identification colour of working channel size
- 3 Working channel diameter
- 4 Corporate brand logo
- 5 Model No.



Each 700 series endoscope displays the information required to choose compatible accessories, which helps to facilitate on-the-spot decision-making.

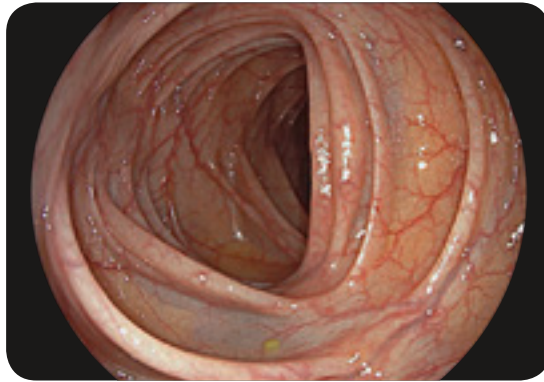
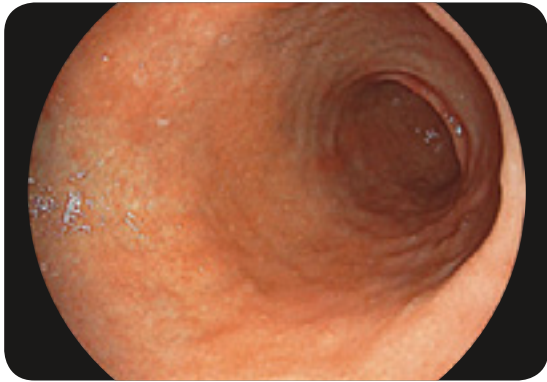


The 700 and 600 series CMOS endoscopes with a full digital processor realise advanced observation and diagnostics.

OVER MEGAPIXEL CMOS IMAGE SENSOR PRODUCING SUPER-HIGH RESOLUTION IMAGE



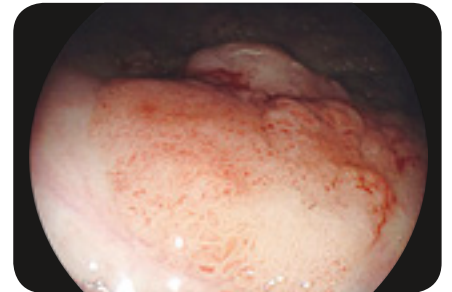
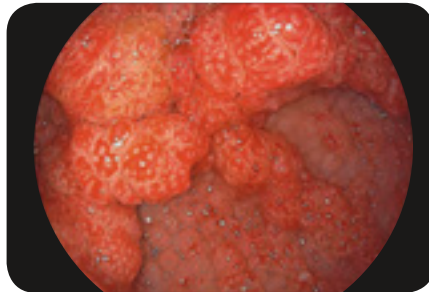
With over Megapixel CMOS image sensor, 700 and 600 series endoscopes produce super-high resolution images, while the leading-edge CMOS technology realises less noise and brilliant images. The CMOS image sensor can change the analogue signal to digital in the tip of the scope. During transmission, the digital signal is much less affected by noise from outside, enabling advanced observation and diagnosis.



CLOSE FOCUS ENHANCES IMAGING FOR DIAGNOSIS



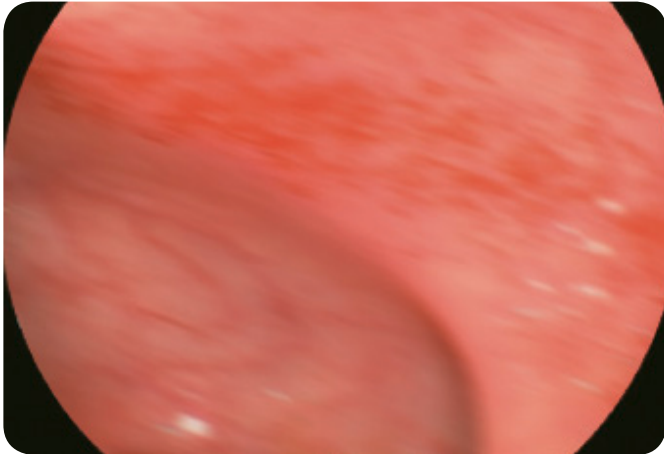
The high performance optical system enhances close focus observation capability **up to 2mm**. The focus at the edges of an image has been improved, minimising distortion in observation of a lumen. The combination of the Megapixel CMOS image sensor and the high performance optical system assists various observations ranging from close-up to distant views.



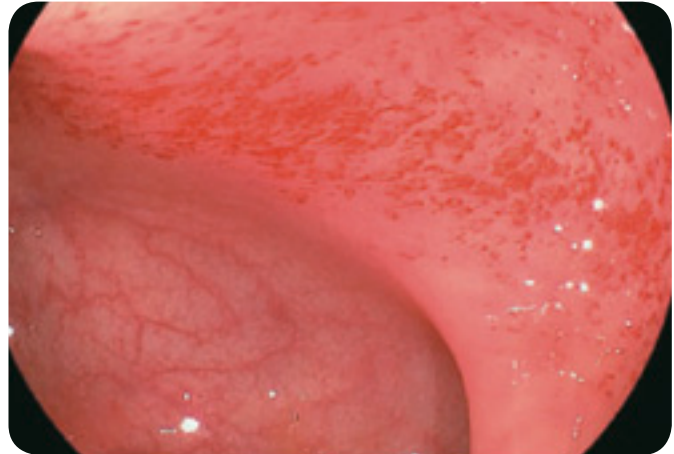
ANTI-BLUR FUNCTION



This function extracts the best still image from multiple images to offer the sharpest and clearest every time.



Freezing the image during the examination:
A sequence of images is always kept in the background



Automatic selection and display of the sharpest image

WATER JET FUNCTION



The gastroscope and colonoscope both feature a water jet function which aids visualisation for both diagnostic and therapeutic procedures.



AUTO PHOTOMETRIC CONTROL

The automatic photometric mode optimally adjusts the lighting in accordance with the positioning of the endoscope, providing you with a well-balanced picture, whether close-up or distant focusing, so you always get optimally illuminated images.*



Distant focus



Close focus

* Available with the 700, 600 and 500 series endoscopes.



UPPER GI ENDOSCOPY

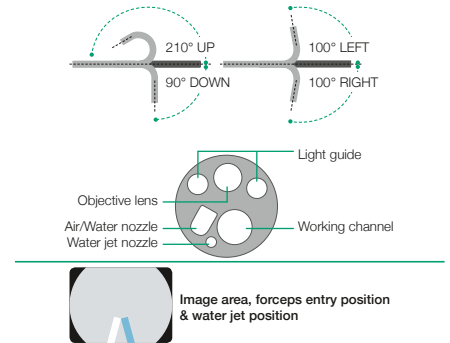
ELUXEO™ VIDEO GASTROSCOPE EG-760R



This routine gastroscope from the ELUXEO™ 700 series is equipped with CMOS technology and provides HD images and videos for daily practice. Close focus allows observation from as little as 2mm in depth.



Field of view	140°
Observation range	2–100 mm
Bending capability	Up 210°/Down 90° Right 100°/Left 100°
Distal end diameter	9.2 mm
Flexible portion diameter	9.3 mm
Working channel diameter	2.8 mm
Working length	1,100 mm
Total length	1,400 mm



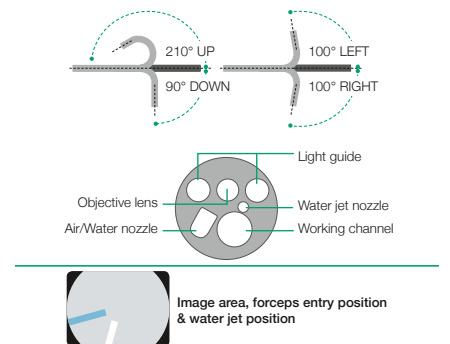
ELUXEO™ VIDEO GASTROSCOPE EG-760Z Optical Magnification



This zoom gastroscope features the well-known 135x Multi Zoom which leads to clear and more detailed visualisation, allowing deeper analysis of mucosal structures. It has a small bending radius and similar functionality to the routine gastroscope including all features.

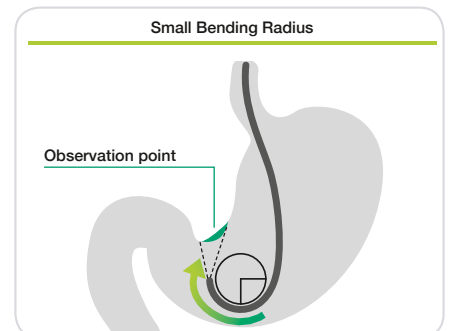
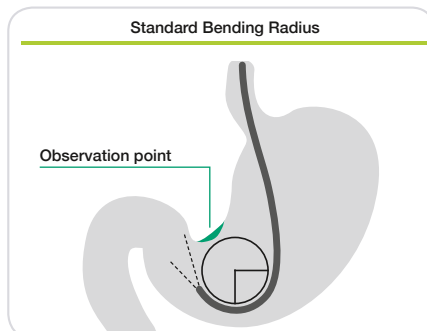


Field of view	Normal 140°/Close 56°
Observation range	1.5–100 mm Normal 3–100 mm Close 1.5–2.5 mm
Bending capability	Up 210°/Down 90° Right 100°/Left 100°
Distal end diameter	9.9 mm
Flexible portion diameter	9.8 mm
Working channel diameter	2.8 mm
Working length	1,100 mm
Total length	1,400 mm



SMALL BENDING RADIUS

The EG-760Z features a tight bending section radius with improved angulation. This allows the endoscope to approach the targeted observation point and lesion more easily and with less effort.



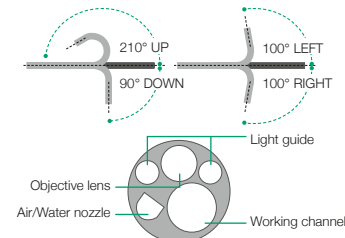
NEW ELUXEO™ VIDEO GASTROSCOPE **EG-740N UltraSlim Type**



This ultraslim gastroscope with a distal end diameter of 5.8 mm is particularly suited to paediatric use and for cases featuring stenosis. The slim distal end also supports a soft transnasal insertion and reduces patient discomfort.



Field of view	140°
Observation range	3–100 mm
Bending capability	Up 210°/Down 90° Right 100°/Left 100°
Distal end diameter	5.8 mm
Flexible portion diameter	5.9 mm
Working channel diameter	2.4 mm
Working length	1,100 mm
Total length	1,400 mm



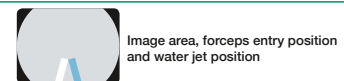
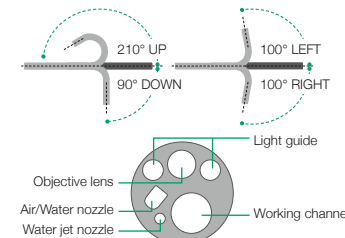
NEW ELUXEO™ VIDEO GASTROSCOPE **EG-760CT Therapeutic Type**



This gastroscope from the ELUXEO™ 700 series is equipped with a large 3.8 mm working channel that is especially suitable for therapeutic procedures compared to the standard gastroscope EG-760R with a working channel of 2.8 mm. In addition to therapeutic use, the gastroscope features LCI for improved detection and BLI for characterising lesions, making it an excellent gastroscope for observation.

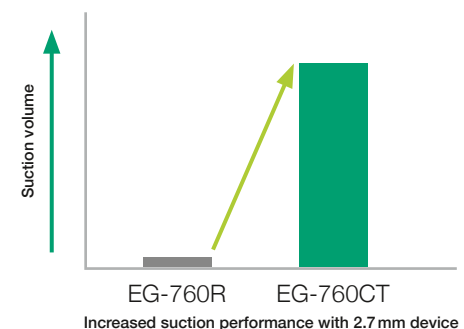
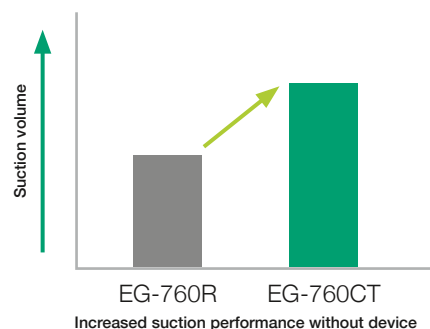


Field of view	140°
Observation range	2–100 mm
Bending capability	Up 210°/Down 90° Right 100°/Left 100°
Distal end diameter	10.5 mm
Insertion tube diameter	10.8 mm
Working channel diameter	3.8 mm
Working length	1,100 mm
Total length	1,400 mm



ENLARGED WORKING CHANNEL FOR IMPROVED SUCTION PERFORMANCE

The 3.8 mm working channel has a higher suction capacity compared to other gastroscopes, especially when the therapeutic accessory is inserted into the working channel.



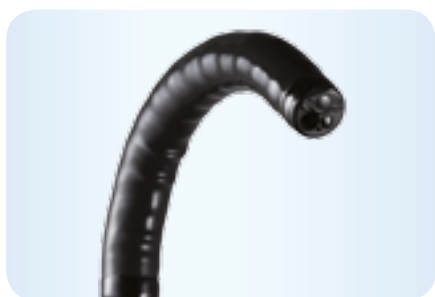


LOWER GI ENDOSCOPY

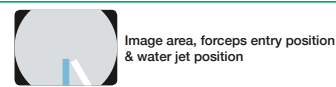
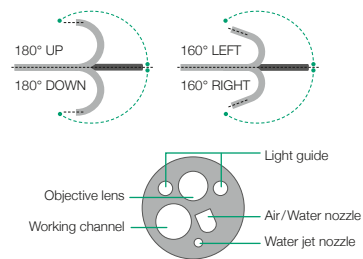
ELUXEO™ VIDEO COLONOSCOPE EC-760R-VM / VI / VL



With a wide field of view of 170° as well as a large working channel diameter of 3.8mm, this is the ultimate routine colonoscope. It features the G7 grip and the Flexibility Adjuster. In addition, it has a slim diameter of 12.0mm and includes a water jet function and CMOS technology.



Field of view	170°
Observation range	2–100mm
Bending capability	Up 180°/Down 180° Right 160°/Left 160°
Distal end diameter	12.0mm
Flexible portion diameter	12.0mm
Working channel diameter	3.8mm
Working length	1,330/1,520/1,690mm
Total length	1,650/1,840/2,010mm



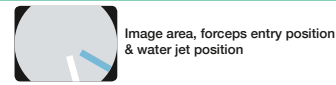
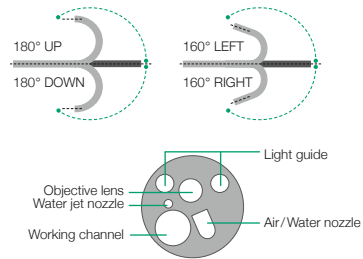
ELUXEO™ VIDEO COLONOSCOPE EC-760ZP-VM / VL Optical Magnification



The slim zoom colonoscope features the brilliant and easy-to-operate Multi Zoom with 135x maximum magnification. Together with BLI, exceptional details of the mucosal and vascular patterns become visible. Like the routine scope, it features the full range of functionalities including flexible adjustment even with the slim diameter of 11.8mm.

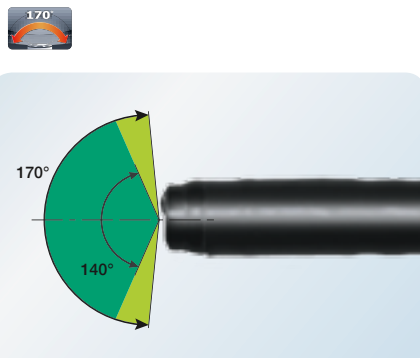


Field of view	Normal 140°/Close 56°
Observation range	1.5–100mm Normal 3–100mm Close 1.5–2.5mm
Bending capability	Up 180°/Down 180° Right 160°/Left 160°
Distal end diameter	11.7mm
Flexible portion diameter	11.8mm
Working channel diameter	3.2mm
Working length	1,330/1,690mm
Total length	1,650/2,010mm



WIDE 170° FIELD OF VIEW

With video colonoscope EC-760R, a wide 170° field of view is available. Even areas that are hard to observe, such as the reverse side of folds, can be visualised more easily.



NEW **ELUXEO™ VIDEO COLONOSCOPE EC-760P-VM / VL Paediatric Type**



This ultraslim colonoscope from the ELUXEO™ 700 series has a distal end diameter of only 11.1 mm and is therefore especially suitable for the paediatric and therapeutic use. A wide 170° field of view enables a visualisation even in hard-to-observe areas. It features the G7 grip and the Flexibility Adjuster for easier insertion



Field of view	170°
Observation range	2–100 mm
Bending capability	Up 180°/Down 180° Right 160°/Left 160°
Distal end diameter	11.1 mm
Insertion tube diameter	11.5 mm
Working channel diameter	3.2 mm
Working length	1,330/1,690 mm
Total length	1,650/2,010 mm

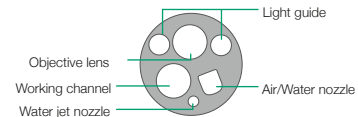
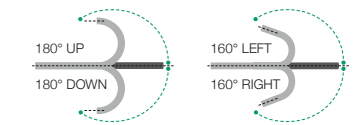


Image area, forceps entry position and water jet position

NEW **ELUXEO™ VIDEO COLONOSCOPE EC-740TM / TL Slim & Treatment Type**



This slim colonoscope is equipped with advanced force transmission, 210° up-angulation and a G7 grip that supports excellent manoeuvrability. It is especially suitable for more challenging anatomies and paediatric use, where it can be applied in cases of stenosis, severe inflammation, or anatomical adhesion. With the additional observation modes – LCI for improved detection and BLI for characterising lesions – this provides an excellent colonoscope for both observation and therapeutic procedures.



Field of view	140°
Observation range	3–100 mm
Bending capability	Up 210°/Down 160° Right 160°/Left 160°
Distal end diameter	9.8 mm
Insertion tube diameter	10.7 mm
Working channel diameter	3.2 mm
Working length	1,330/1,690 mm
Total length	1,650/2,010 mm

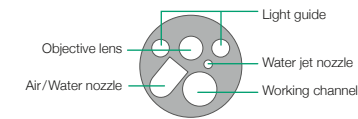
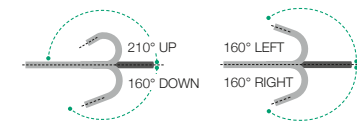


Image area, forceps entry position and water jet position

SMART BEND



Smart Bend provides excellent manoeuvrability, observation and therapeutic treatments from 210° up angulation and a small bending radius.

Lesions which are difficult to reach can be easily treated due to the smart bending ability as well as the small bending radius.



Smart bend colonoscope EC-580RD/M,L



Colonoscope without smart bend