



DOUBLE BALLOON ENDOSCOPY

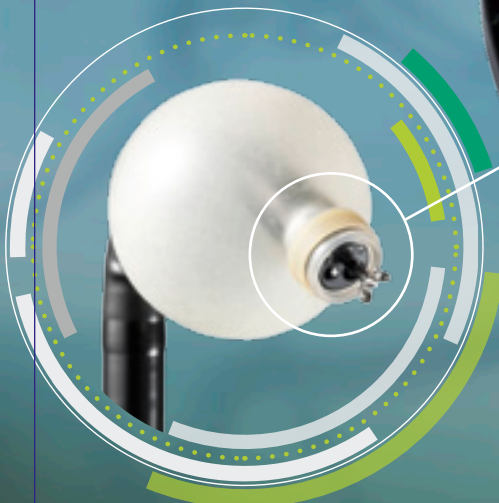
By developing the double balloon endoscopy, Fujifilm made it possible for the first time to examine and treat the complete small intestine. The two-balloon system is revolutionary, providing an unparalleled level of detail and is, to this day, the gold standard in examination of the small intestine. It is also commonly used in ERCPs with altered conditions post-surgery.



**PUSH
& PULL
SYSTEM**

3.2 mm

Enlarged working channel for efficient treatment



**DOUBLE BALLOON
ENDOSCOPY**

**ONE-TOUCH
CONNECTOR**

SYSTEM

DOUBLE BALLOON ENDOSCOPY

Double balloon endoscopy is a revolutionary technique that allows the whole length of the small intestine to be visualised, opening doors to new therapeutic interventions.

Fujifilm developed the DBE system to meet the clinical needs for more precise and efficient diagnoses and treatment.



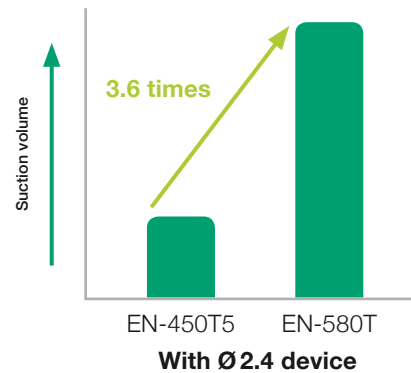
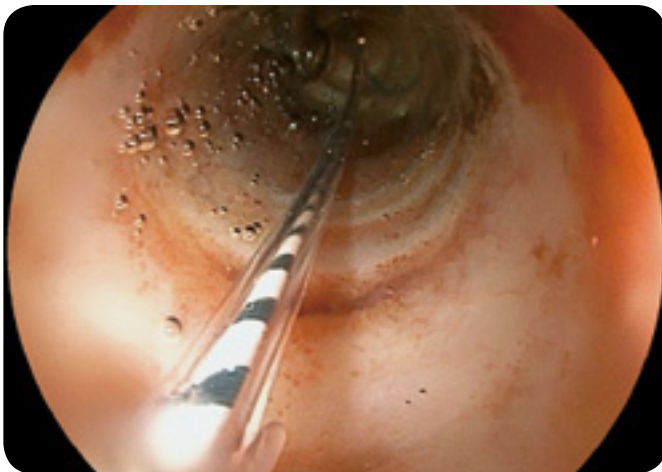
Oral insertion (small intestine)



Anal insertion (small intestine)

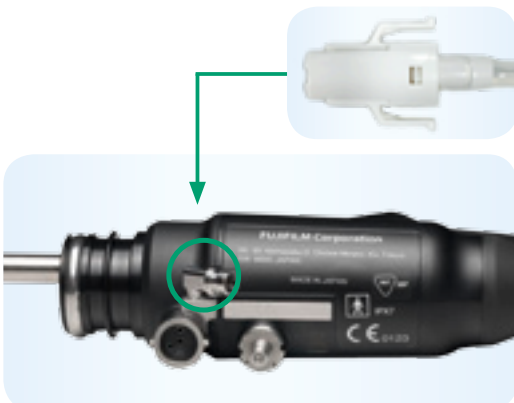
WORKING CHANNEL WITH 3.2MM DIAMETER

The enlarged 3.2mm working channel suits procedures such as hemostasis and balloon dilation. It enables blood or mucus to be aspirated while a therapeutic device is inserted, making hemostasis quicker. The large working channel is also designed for easier insertion and removal of a balloon catheter before and after dilation of stricture.



The 3.2mm working channel provides greater suction performance than conventional models.
(According to Fujifilm data)

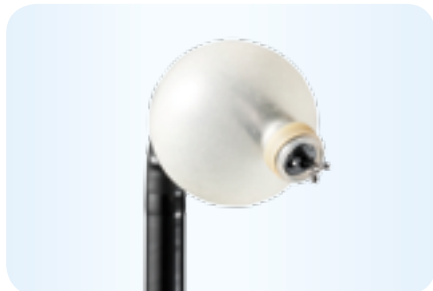
ESPECIALLY DESIGNED ONE-TOUCH CONNECTOR AND RELOCATED BALLOON AIR FEED INLET FOR BETTER OPERABILITY



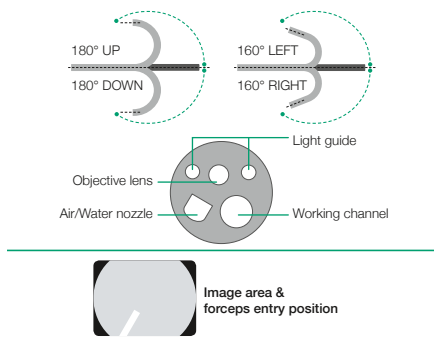
The balloon air feed inlet has been relocated from the control portion to the connector portion, creating a better examination environment. Also, a one-touch type connector especially designed for the balloon air feed inlet on the endoscope is provided, making the preparation simpler.



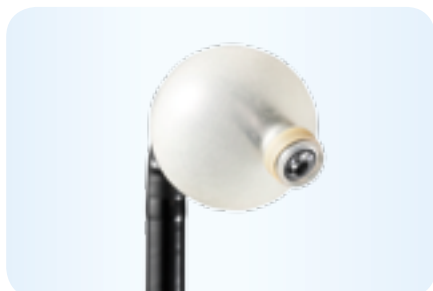
ENTEROSCOPE **EN-580T** Therapeutic Type



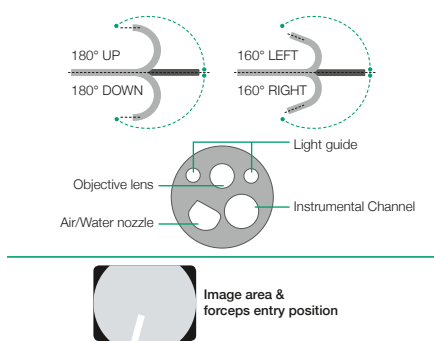
Viewing direction	0° (Forward)
Field of view	140°
Observation range	2–100mm
Bending capability	Up 180° /Down 180° Right 160° /Left 160°
Distal end diameter	9.4mm
Flexible portion diameter	9.3mm
Working channel diameter	3.2mm
Working length	2,000mm
Total length	2,300mm



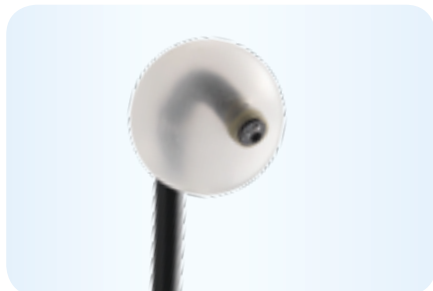
ENTEROSCOPE **EN-580XP** Slim Type



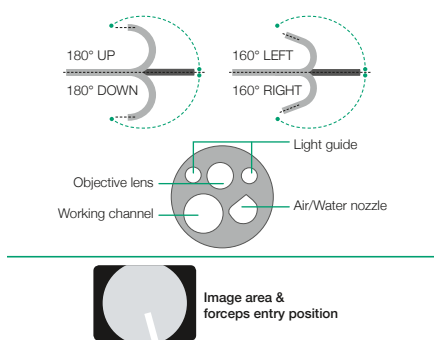
Field of view	140°
Observation range	2–100mm
Bending capability	Up 180° /Down 180° Right 160° /Left 160°
Distal end diameter	7.5mm
Flexible portion diameter	7.7mm
Working channel diameter	2.2mm
Working length	2,000mm
Total length	2,300mm



„SHORT“ DOUBLE-BALLOON ENDOSCOPE **EI-580BT**



Viewing direction	0° (Forward)
Field of view	140°
Observation range	2–100mm
Bending capability	Up 180° /Down 180° Right 160° /Left 160°
Distal end diameter	9.4mm
Flexible portion diameter	9.3mm
Working length	1,550mm
Total length	1,850mm
Working channel diameter	3.2mm



OVERTUBE **TS-1114B / 1214B / 1314B** 

Silicone overtube, sterile, single-use, with expiration date (contains silicone rubber)



Overtube model	TS-1114B	TS-1214B	TS-1314B
Applicable endoscopes	EN-580XP	EN-450P520	EN-450T5 EN-580T

OVERTUBE **TS-12140 / 13140 / 13101**

Latex overtube, sterile, single use, with expiration date (contains natural rubber latex)



Overtube model	TS-12140	TS-13140	TS-13101
Applicable endoscopes	EN-450P520	EN-450T5 EN-580T	EC-450BI5 EI-580BT

CONNECTION TUBE **TY-400 / TY-500** 



TY-400:

Connection tube kit for silicone overtube, PB-20/30 and 450 series – exchange once every month or once every 10 cases

TY-500:

Connection tube kit for silicone overtube, PB-20/30 and endoscopes EN-580T & EN-580XP – exchange once every month or once every 10 cases



CONNECTION TUBE **TY-04 / TY-06**



TY-04:

Connection tube kit for latex overtube, PB-20/30 and 450 series – exchange once every month or once every 10 cases

TY-06:

One-touch-connector set (2 tubes) for latex overtube, PB-20/30 and 500 series

BALLOON **BS-4**



Endoscope balloon Ø35mm, single-use, with expiration date (contains silicone rubber)
(10 pcs balloon + 20 pcs rubber band/pack)

ST-10 is needed to attach

BALLOON **BS-2**



Endoscope balloon Ø35mm, single-use, with expiration date (contains natural rubber latex)

(10 pcs balloon + 20 pcs rubber band/pack)

BALLOON CONTROL UNIT **PB-30**

To be used to control the pressures inside the balloons which are inflated and deflated during DBE examinations



Maximum flow rate of pump	170 ml ± 50 ml / 10 sec.
Set pressure accuracy	± 2 kpa
Set pressure of balloon	5.6 kpa
Weight	7.0 kg (Main unit), 0.4 kg (Remote switch)
Power	AC100-240V 50/60 Hz 0.8A
Dimensions (W x H x D)	145 x 170 x 410 mm

BALLOON SETTING TOOLS **ST-05B / ST-10**

To fix the balloon and the rubber bands

